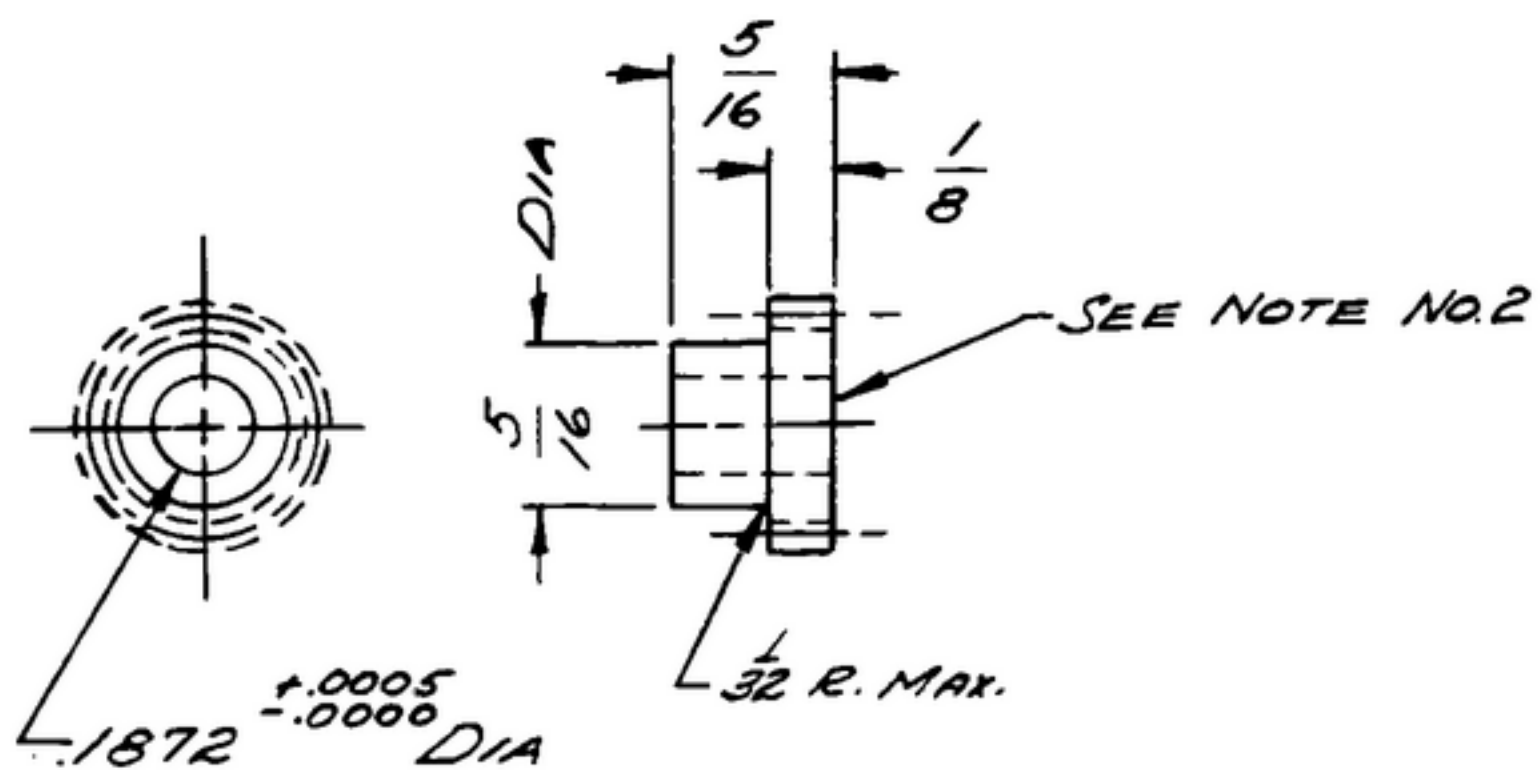


NOTICE: WHEN GOVERNMENT DRAWINGS, SPECIFICATIONS, OR OTHER DATA ARE USED FOR ANY PURPOSE OTHER THAN IN CONNECTION WITH A DEFINITELY RELATED GOVERNMENT PROCUREMENT OPERATION, THE UNITED STATES GOVERNMENT THEREBY INCURS NO RESPONSIBILITY FOR ANY OBLIGATION WHATSOEVER AND THE FACT THAT THE GOVERNMENT MAY HAVE FORMULATED, PROVIDED, OR IN ANY WAY SUPPLIED THE SAID DRAWINGS, SPECIFICATIONS, OR OTHER DATA IS NOT TO BE REGARDED BY IMPLICATION OR OTHERWISE AS IN ANY MANNER LICENSING THE HOLDER OR ANY OTHER PERSON OR CORPORATION, OR CONFERRING ANY RIGHTS OR PERMISSIONS TO MANUFACTURE, USE, OR SELL ANY PATENTED INVENTION THAT MAY IN ANY WAY BE RELATED THERETO.

THIS DOCUMENT HAS BEEN PURCHASED BY THE GOVERNMENT AND MAY BE REPRODUCED AND USED IN CONNECTION WITH ANY GOVERNMENT PROCUREMENT OR MAINTENANCE OPERATION.

\* FOR INFORMATION ONLY. CONTRACTOR MAY AT HIS OPTION DEVIATE FROM THESE PROCESS DETAILS.

REVISIONS			
SYM	DESCRIPTION	DATE	APPROVAL



NOTES:

1. GEAR DATA:  
 NORMAL DIAMETRAL PITCH 48  
 NORMAL PRESSURE ANGLE 20°  
 NUMBER OF TEETH 20  
 THEORETICAL PITCH DIAMETER .4166  
 BACKLASH .002 TO .003 WHEN REFERRED TO THE THEORETICAL PITCH CIRCLE.  
 TOTAL COMPOSITE ERROR NOT TO EXCEED .003 WHEN MEASURED WITH MASTER GEAR.  
 AMERICAN STANDARD INVOLUTE TOOTH FORM  
 ALL TERMS USED AS DEFINED BY A. G. M. A. STANDARDS.
2. SIDE SHOWN MUST BE FREE OF BURRS.

*CRE5, COMP. 3035 COND. B, PER SPEC. MIL-S-7720, SURFACE COND. d.*

*FINISH: E300 PER SPEC. MIL-F-14072.*

*\* COLLINS 588 0025 00.*

COLLINS PART NO.	ITEM	REQD.	PART NO.	DESCRIPTION	MATL.	MATL. SPEC.
LIST OF MATERIAL						
COLLINS PART NO. <i>588 0243 002</i>						

				DRAWN <i>Hamer</i>	CHECKED <i>Williams</i>	APPROVED	COLLINS RADIO CO. CEDAR RAPIDS, IOWA 14214-PH-51-93 SIGNAL CORPS REVIEWED <i>PME</i> APPROVED <i>HLV</i> <i>PME</i> DATE <i>6 DEC 55</i>		GEAR - SPUR	DEPARTMENT OF THE ARMY SIGNAL CORPS ENGINEERING LABORATORIES FORT MONMOUTH NEW JERSEY	
				UNLESS OTHERWISE SPECIFIED: DECIMAL DIMENSIONS INCLUDING HOLE SIZES MAY VARY ±.008 FRACTIONAL DIMENSIONS INCLUDING HOLE SIZES MAY VARY ±1/64 MACHINED ANGLES MAY VARY ±1° SHEARED ANGLES MAY VARY ±.25° BROKEN ANGLES MAY VARY ±1° ECCENTRICITY BETWEEN ANY DIAMETERS ON THE SAME CENTERLINE SHALL NOT EXCEED .010 TOTAL INDICATOR READING. ALL DIMENSIONS ARE FINISH DIMENSIONS INCLUDING APPLIED FINISH AND ARE GIVEN IN INCHES.			DATE <i>6 DEC 55</i> SCALE <i>2/1</i>				<i>SM-B-248894</i>
558-0287002 + 5M-B-248938 SC-DL-248775 COLLINS NO. QTY NEXT ASSY USED ON APPLICATION											